

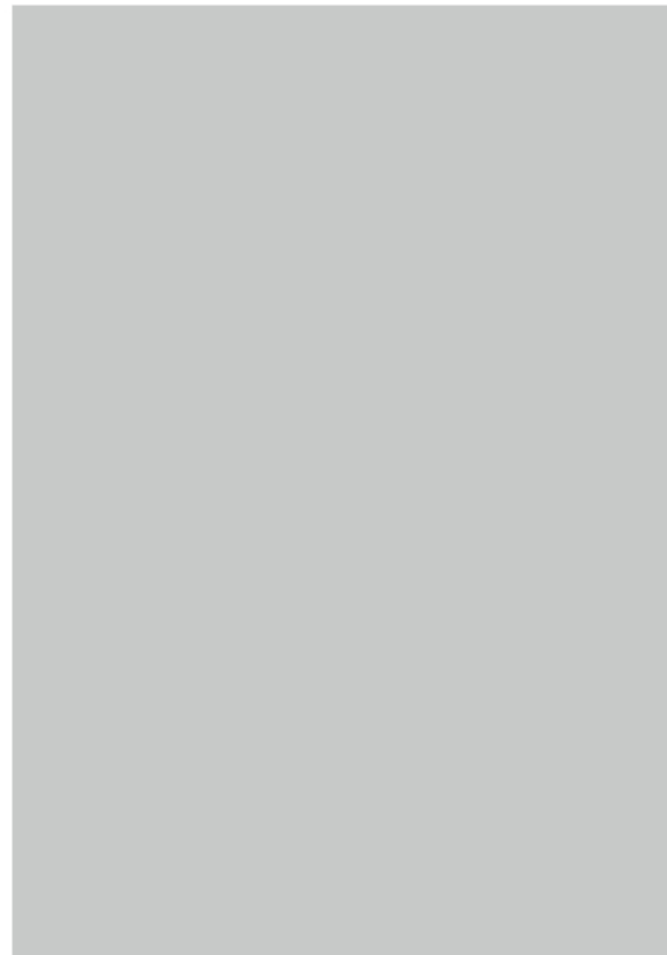
# Artwork Specifications

## Glue Bound

- 1** Please advise the side to which you wish to do the glue-binding (top or left side) at the time of placing the order.
- 2** Our standard padding support is a 0.8mm thick strawboard. It is used on the bottom of every pad. If you do not wish to use such padding, please let us know in advance, however no price reduction would apply even without the use of the strawboard.
- 3** Please allow at least 2mm bleed on all sides of the pad, for easier trimming.
- 4** Artwork files finish **Glue Bound**:

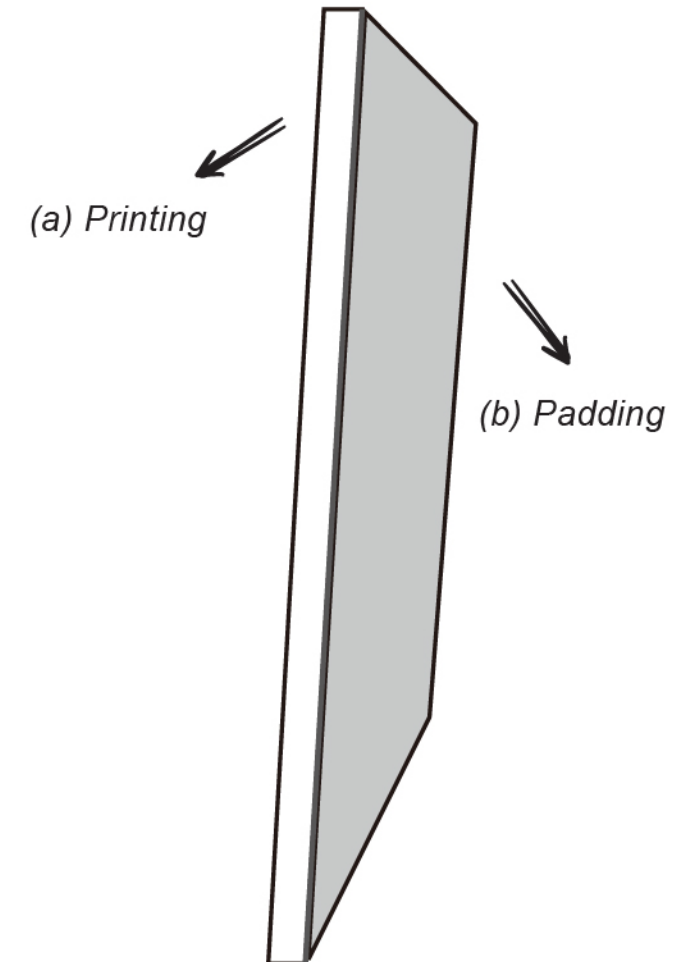


+



strawboard

=





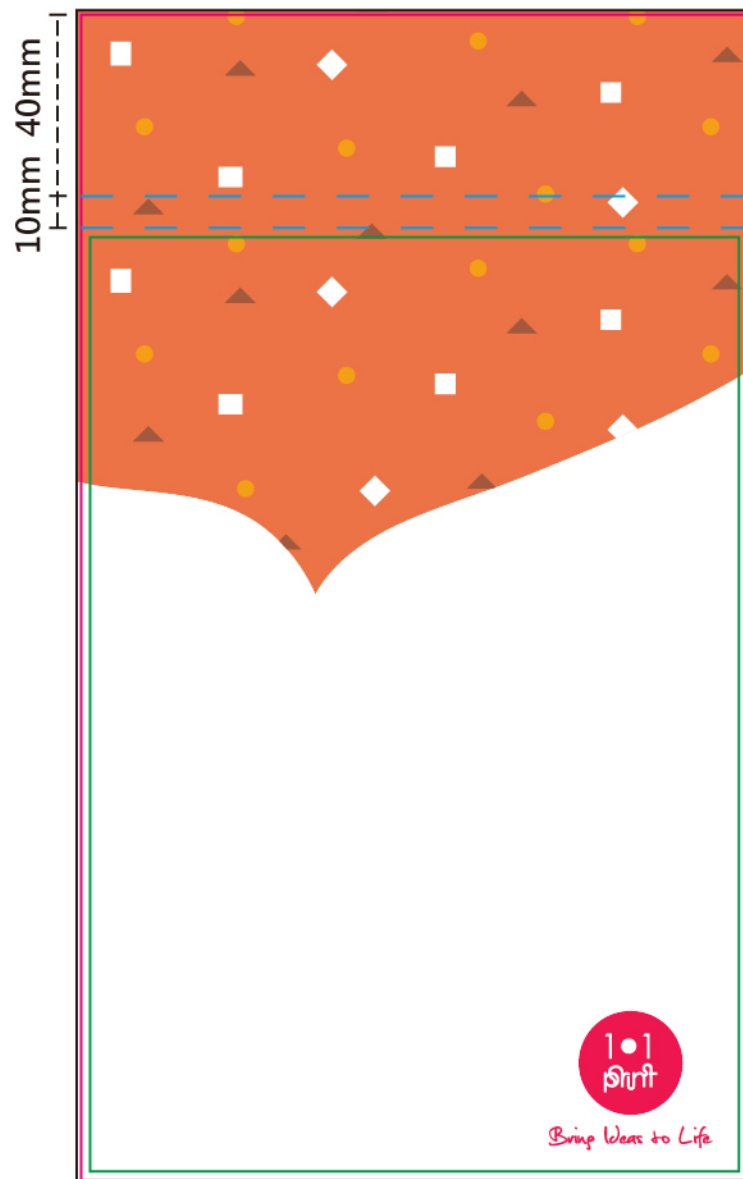
# Artwork Specifications



## Glue Bound with Cover

- 1** Please advise the side to which you wish to do the glue-binding (top or left side) at the time of placing the order.
- 2** Our standard padding support is a 0.8mm thick strawboard. It is used on the bottom of every pad. If you do not wish to use such padding, please let us know in advance, however no price reduction would apply even without the use of the strawboard.
- 3** Please allow at least 2mm bleed on all sides of the pad, for easier trimming.
- 4** You need to allow some room for the spine area in your artwork. The width of the spine depends on the number of pages per pad. Usually allow approximately 10mm for the spine width. We can also adjust the spine width for you upon receiving your artwork.

### Artwork files finish Glue Bound with Cover:

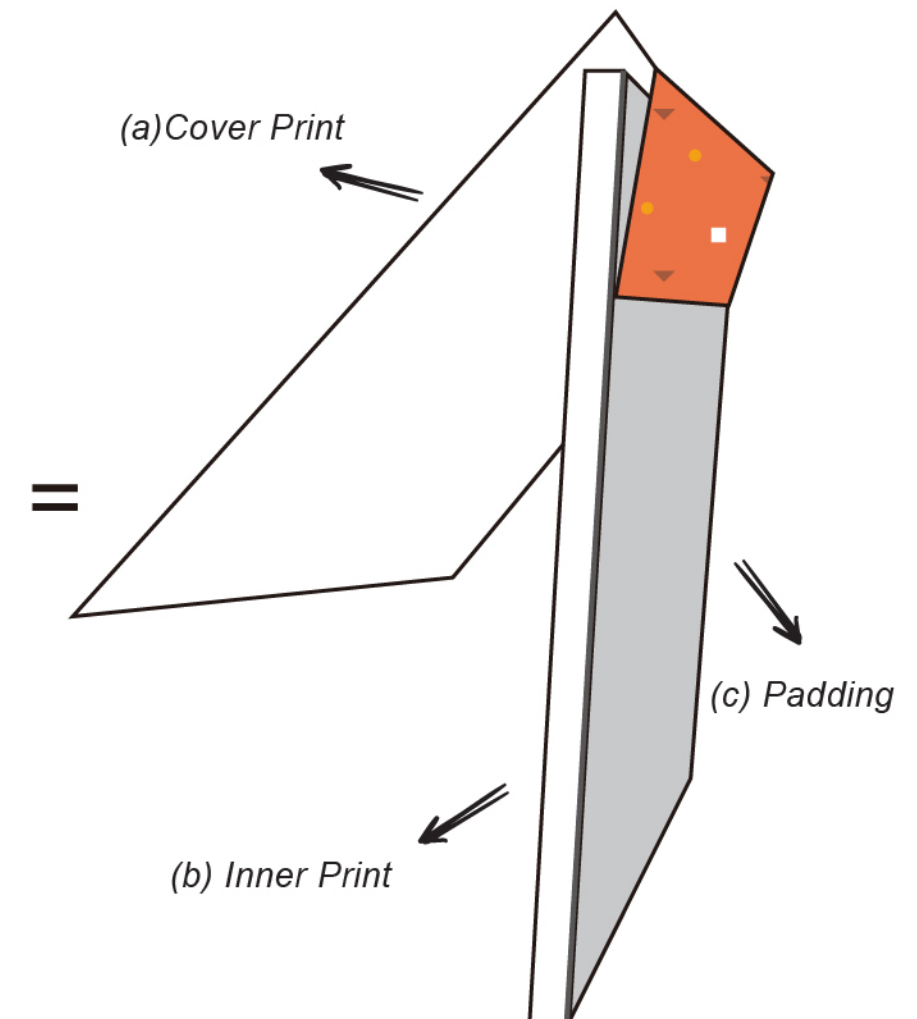


Cover

+



inside



# Artwork Specifications

## Wire-o Bound

- 1** Please advise the side to which you wish to do the wire-o-binding (top or left side) at the time of placing the order.
- 2** Our standard padding support is a 0.8mm thick strawboard. It is used on the bottom of every pad. If you do not wish to use such padding, please let us know in advance, however no price reduction would apply even without the use of the strawboard.
- 3** Please allow at least 2mm bleed on all sides of the pad, and leave 15mm gap from the edge of the binding side to allow for wire-o-binding.
- 4** There are 3 colours to choose from, for the double wire loops: Black, White, or Silver. In the event of no indication of specific colour, silver loops will be used to produce your order.

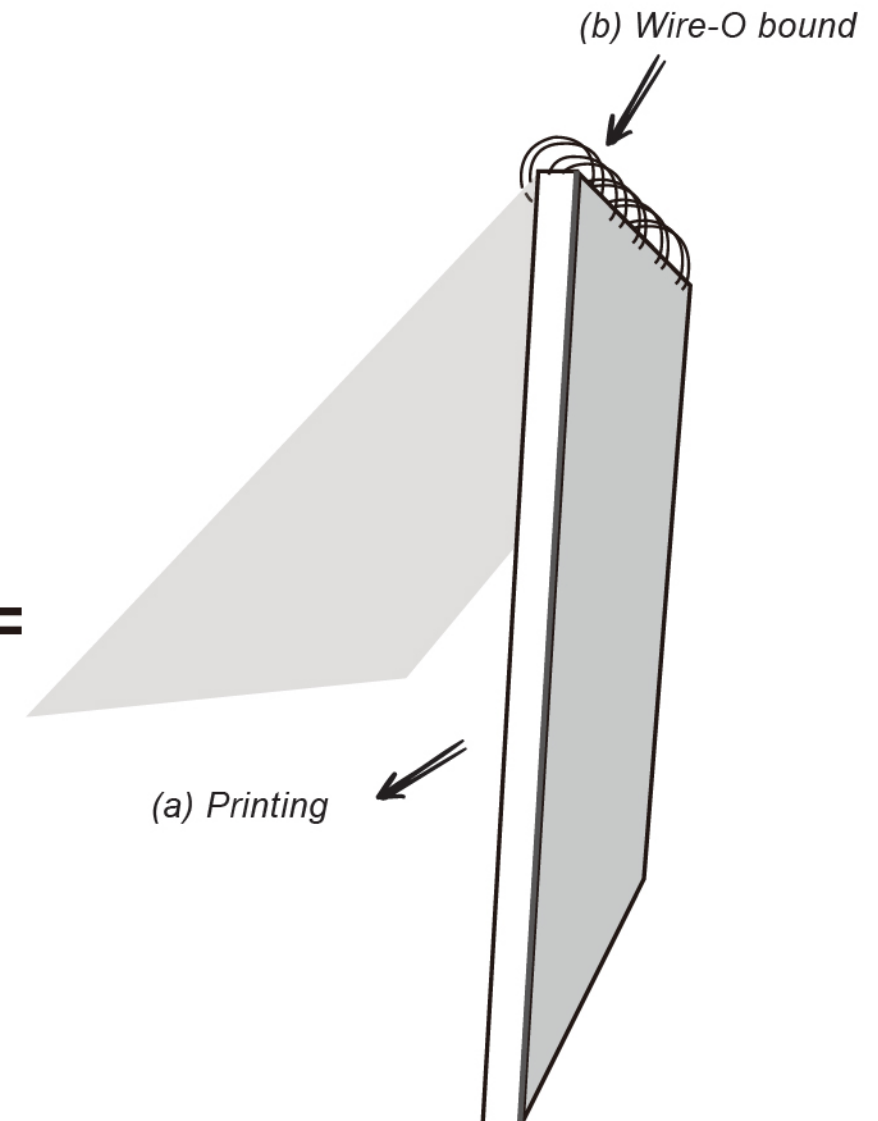
### Artwork files finish Wire Bound:



+



=



transparent plastic cover + strawboard